



# The Grayswood Runner



this banner was designed with assistance from Gold Class, Grayswood School 2006/2007

February 2008

## ARE WE ALL TOO BUSY?

The bulbs were poking their heads out shortly after Christmas, the witch hazel in the neighbour's garden flowered in the first week of the new year, and before you know it we are preparing for another Grayswood Easter. Time runs at the same pace that it ever did, but it seems to be running faster and faster. The immediacy of communications, and in particular mobile phones and email has meant that not only are we always accessible but immediate response is required. Even on holiday! The prospect of life in the Lent desert, where time slows down and the immediate demands of modern day life disappear, can suddenly seem rather appealing! Given that few of us have 40 days and nights to spare, it might be worth considering coming to the special **Chocolat** evenings (listed opposite) in February and March. These events offer a couple of hours away from the mad rush of daily life, to enjoy, learn and ponder. A time to reflect on deeper matters.

Or am I just much too busy?

Editor

### Events in February

Gardening Club	7th
Men's Breakfast	8th
Book Group	12th
WI	13th
Good News Van	25th

## THE GENUINE ARTICLE

Dear friends

"She's an angel", we say, and we usually mean that someone has gone out of their way to do something for us. It sounds rather as if we don't think that human beings are capable of doing good things for others. Which isn't true of course. What if we said something like: "He's a genuine (or authentic) human being"? Because that's nearer the truth. Genuinely and authentically human beings embrace life in all its fullness and help others to do the same.

We know that human nature has a dark side; we only have to read the papers and watch the News, where authentic human beings only very occasionally get a mention. Traditionally, Lent has been about fighting the dark side in ourselves. What if we emphasised the flip side of that for a change? What if we said, "How can I (and how can we) become more authentically human?" Irenaeus, an early church father from the second century, said that the glory of God is a human being fully alive. Same thought. Living life to the full, enjoying and appreciating the goodness and the beauty of the world and seeing the good in people first before criticising them. That sort of joie de vivre goes deep and is infectious.

For the writers of the gospels it was important to show that the adult Jesus was fully human, and they did it firstly by showing him exposed to temptation – temptation to put himself first, to satisfy his own needs above other peoples', to go for power and glory at any cost. But they also showed his enjoyment of life – feasting and partying with friends, being witty (not easy to spot in English) and engaging with people on a real level – none of your superficial relationships here, except when people kept him at a distance of course.

So how about giving ourselves opportunity in Lent this year to become more authentically human? That may mean for you that you do give up something, to prove to yourself that things like biscuits and cake do not master you, but you them. But it may mean that you go out of your way to help others wherever you see a need. It may mean enjoying a film which makes you think about life. It may mean being more aware of looking for the good in people, while not denying of course that failure, weakness and sinfulness are still part of being human. Embrace life and so be a genuine human being. Our special evenings in Lent this year follow this thought.

Every blessing for a joy-filled Lent.

Barbara Steele-Perkins



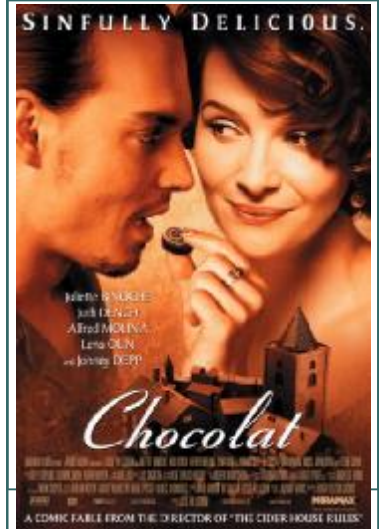
## CHRISTINGLE AT ALL SAINTS, GRAYSWOOD

27TH JANUARY 2008, 10.00 AM

It seems that most children in the village

find this service the very best one of the year.

It is great fun — anything involving sweets and blowing out candles is fun of course, and the message behind it is very special. The annual Christingle service is here again!



## REFRESHMENT FOR THE SOUL

### Special Evenings for Lent 2008

We start with coffee at 7.45 for 8pm, except where stated.

13 Feb *Becoming fully human* Dr Colin Brown in church

20 Feb *Chocolat* - the film Oonagh Jeffery Room

27 Feb *Sharing Chocolat(e)* - discussion, Oonagh Jeffery Room

5 March *Into the Depths* - through paint and clay Rev Nick Whitehead, Oonagh Jeffery Room

12 March *Finding God in a Jelly Bean*, Canon Hazel Whitehead in church

Maundy Thursday, 20th March, Evening Communion with Supper Oonagh Jeffery Room

**Stop Press!**  
Light Classical Concert  
11th March at 2.30  
HHH Concert at Village Hall—  
afternoon concert—all welcome!  
Call Sarah on 643129

Contacting the Runner : Telephone: 01428 656504, [editor@grayswoodparish.org](mailto:editor@grayswoodparish.org)

## All Saints Matters

### Sunday Services

**8.00 am** Holy Communion every week

**10.00 am** services are very accommodating for families with young children—we have crèche facilities, fun for older children at Sunday School, and really don't mind if children make a bit of noise in church either! In fact we particularly encourage children to enjoy our church and join in with the first part of our service.

**1st Sunday:** Parish Communion

**2nd Sunday:** Morning Worship

**3rd Sunday:** Parish Communion

**4th Sunday:** All age Morning Worship

**5th Sunday** we usually join in with St Barts or St Christophers, either in Grayswood or Haslemere—see notices on the Church Door!

Evening Services are occasional but are advertised in the village.

**Mondays** at 9 am (not Bank Holidays) - a short meditative service which follows the pattern of the Church since its early days

### Thursdays

**1st and 3rd Thursday** Holy Communion using the BCP (old prayer book)

**5th Thursday**—Modern Iona style Communion Service

At all services we pray for people in any sort of need. If you would like us to pray for someone in particular - or be prayed for yourself (we need only a first name and you don't have to give a reason), either pop a note into Church House, leave a message on the answerphone, write in the book at the back of church, or ask someone to pass the message on.

### Sacred space

The church building is usually open every day from about 9am until dusk in winter, about 6pm in summer. It's a peaceful place to think, meditate, dream, pray.

### Contacting All Saints

Our vicar **Barbara Steele-Perkins** ([barbarasteelerperkins@tiscali.co.uk](mailto:barbarasteelerperkins@tiscali.co.uk)) is officially on duty all day Sunday and Thursday, and Monday and Friday mornings; she also works part-time for the diocese, but both jobs allow for some flexibility. She responds to answerphone messages left on 656504 every day except Tuesday and will get back to you as soon as possible. **Janet Fry**, our church administrator, works in **Church Office** 656504 (in Church House) which is open Monday, Wed, and Fri mornings from 9am-12 noon. **Doreen Hutton** 644178 is the coordinator of pastoral care in the parish. Please contact her if you would like someone to visit you - for whatever reason. You are promised complete confidentiality. If you would like to donate flowers at any time - in memory of someone or at a special anniversary. **Jaquie Lisle** 661091 is our flower coordinator. If you need a vicar urgently and can't get through to Barbara, phone **Norman Jones**, Rector of Haslemere (644578).

### Some Things to do in February

#### around and about Grayswood

**1st Feb**—Jazz at the Georgian Hotel  
8.00 pm 656644

**1st Feb**—Piano Recital, St Bartholomews, 7.30 Haydn, Liszt, Beethoven etc

**1st Feb**—Film: Stardust, Haslemere Hall,  
8.00 pm 661793

**2nd Feb**—Quiz Night, 7.30 The Link,  
fund raising for St Barts/ St Christophers

**6th Feb**—Ash Wednesday Service at All Saints, 8.00 pm

**9th Feb** - HHH Concert, 7.30 Piano Recital, St Christophers 652448

**14th Feb**— St Valentines Day!

**19-23 Feb**—Opera South, The Bohemian Girl by Michael Balfe 656644

**23rd Feb**—Cartoon de Salvo, Haslewey, an evening of Alternative Theatre

**26 Feb**—Haslemere Decorate and Fine Arts Society, 2.00 February Lecture on Love and Loss, the Story of Orpheus and Euridice in Art and Music, Haslemere Hall



#### USEFUL GRAYSWOOD PHONE NUMBERS

**Church Office** 656504  
**Village Hall Bookings** 643859  
**Wheatshaf Pub** 644440  
**The Grayswood Club** 644154  
**Grayswood School** 642086  
**Grayswood Cars** 642303  
**Barkers** 642894  
**Haslemere Herald** 651271  
**Haslemere Hall** 642161  
**Hairdresser** 642821  
**Village Hall Payphone** 658931

#### VILLAGE PRAYER

In February we pray for, and think about, those who live in the Mount, Upper Mount and Williamson Close.

#### GRAYSWOOD WAR MEMORIAL

A local resident is researching the names recorded on the Grayswood war memorial and would like to hear from anyone with a personal connection with any of them. The memorial is a special part of Grayswood history and well worth a visit.

If you have anything you would be willing to share please ring Barbara on 654988 who would be pleased to hear from you.



#### LUNCHES IN LENT!

Come and meet for a chat and share a light informal lunch in homes around the village during Lent. The lunches are on Thursdays and will be from 12 noon and finish by 2 pm. All are most welcome. The dates and venues are:

Thursday **14<sup>th</sup> Feb**, Little Stroud, Grayswood Road - Jacquie Lisle 661091

Thursday **21<sup>st</sup> Feb**, Little Home Close - Judy Culhane 644125

Thursday **28<sup>th</sup> Feb**, 4 Paddock Way, Prestwick Lane - Pauline Lamb 643798

Thursday **6<sup>th</sup> March**, Church House - Barbara Steele-Perkins 656504

Thursday **13<sup>th</sup> March**, Wyck House, Holdfast Lane - Daphne Bleach 643140

Lunches Transport Problem? Call Judy 644125